



MINNESOTA
CHAMBER *of*
COMMERCE

2013 MINNESOTA
LEGISLATIVE VOTING RECORD
& BILL SUMMARY



Table of Contents

Introduction	3
Legislature Bills & Commentary	
Education & Workforce, Elections	4
Energy, Environment	5
Fiscal, Health Care	6
Labor, Transportation	7
Senate Voting Record	8
House Voting Record	10

The Mission

The Minnesota Chamber of Commerce will proactively lead the business community statewide to:

- Advance pro-business, responsible Minnesota public policy that creates jobs and grows the economy*
- Provide member services to address evolving business needs*
- Be nonpartisan*



For the first time in more than 20 years, the Minnesota Legislature and executive branch were governed by single-party control. The 2012 election swept Democrats into the majority with Governor Mark Dayton at midpoint in his first term.

With this political backdrop, the Minnesota Chamber worked hard on behalf of our 2,300 members statewide to bring balance to the debate at the Capitol. We were successful in mitigating a number of legislative proposals that would have been harmful to businesses in our state. One example was our broad grassroots campaign that effectively limited Governor Dayton's proposal to extend the state sales tax to business-to-business services. Had it passed as the Governor proposed, this new tax would have cost Minnesota businesses \$3.2 billion. Another was blocking an increase in the state minimum wage far beyond federal levels and those of neighboring states.

Despite these efforts, the session's results will have a significant impact on employers and Minnesota's economic competitiveness going forward. Rather than prioritizing spending, reforming and redesigning operations and services, the Governor and Legislature chose to raise more than \$2.3 billion in taxes to resolve a \$627 million short-term budget shortfall, impose a host of new fees and regulations, and roll back bipartisan

reforms and initiatives. The result is more government at higher cost with no guarantee of better results or improved quality of life for Minnesotans. Government spending will grow by nearly \$3 billion, an 8% increase in FY 2014-2015, and nearly \$4 billion, an 11% increase in FY 2016-2017.

The 2013 Legislative Voting Record includes votes on key issues based on our members' priorities. Our successes are measured not only by legislation passed, but also by legislation blocked. It's unfortunate, but as a result of the 2012 elections, we found ourselves doing more blocking than passing. That means we did not make the progress we had hoped for in strengthening our state's business and job creation environment.

We are grateful to the senators and representatives who listened to the concerns of employers and voted in support of the Chamber's position. After you review our report, please take time to thank those policy-makers who voted with us on key issues. Don't neglect those who did not. Use their votes to begin a conversation about the impact their actions will have on your business. Help them understand why, had they voted with the Chamber, your business would be stronger and, potentially, employing more of their constituents.

EDUCATION AND WORKFORCE DEVELOPMENT

Education and workforce development are priority issues for the Minnesota Chamber. In 2013, we sought solutions to address the immediate workforce need for a greater supply of skilled workers and improve the strength of the education-to-workforce pipeline.

HF 729 - Workforce Development Provisions in the Omnibus Jobs and Economic Development Bill *

The Chamber's workforce development bill (SF 899/HF 1046), carried by Senator Terri Bonoff, DFL-Minnetonka, and Representative Tim Mahoney, DFL - St. Paul, was ultimately included within the Omnibus Jobs and Economic Development Bill (HF 729). The bill contained measures to strengthen workforce development through publication of labor market supply and demand reports, use of data to guide postsecondary program offerings, and better use of workforce centers to assist adults and students with career pathway counseling. In the Omnibus Jobs Bill, we also advanced a pilot program in manufacturing to enable students to receive customized education paired with on-the-job skills training. The Chamber strongly supported these provisions; however, the vote on this bill was not scored due to other provisions in the bill (discussed below).

SF 1236 - Omnibus Higher Education Bill *

By 2018, 70 percent of the jobs in Minnesota will require some postsecondary training. That urgency compelled the Chamber to examine postsecondary education in Minnesota and advocate policy recommendations to ensure students are ready for postsecondary education, can afford and are benefiting from postsecondary experiences, and are well prepared for the workforce. The Omnibus Higher Education Bill contained several policy provisions supported by the Chamber, including (1) enhanced performance funding measures for the University of Minnesota and the Minnesota State Colleges and University System; (2) investment in Teach for America; (3) continued development of the State

Longitudinal Education Database (SLEDS); and (4) improved affordability for students. While the Chamber strongly supported these provisions, proposed spending levels for this budget item and other sectors of the state budget required substantial revenue increases, causing serious concern.

LEGISLATOR SPOTLIGHT:

WORKFORCE

REP. TIM MAHONEY

DFL-ST. PAUL

REP. JASON ISAACSON

DFL-SHOREVIEW

SEN. TERRI BONOFF

DFL-MINNETONKA

These legislators were key advocates for advancing workforce development policies. Representative Tim Mahoney was chief author of Chamber-led legislation requiring production of a workforce report that will be used to better understand Minnesota's workforce needs. Freshman Representative Jason Isaacson developed legislation that creates a customized training program in manufacturing that integrates academic instruction and on-the-job training to meet employers' training needs. Senator Terri Bonoff was chief author of Chamber-led workforce development legislation, and crafted an omnibus higher education bill containing key measures needed to improve the strength of the education-to-workforce pipeline.

HF 630 - Final K-12 Education Omnibus Conference Committee Report

The Chamber opposed several major policy and finance provisions in the K-12 Education Omnibus Conference Committee Report. Although the bill made investments in early childhood education, all-day kindergarten, and the general education formula, other provisions required us to oppose the bill. The Chamber's primary objections included lowered expectations for obtaining a high school diploma (see below), and returning to a statewide general education levy without a corresponding reduction in the statewide business property tax, which results in an additional layer of property taxes on Minnesota businesses.



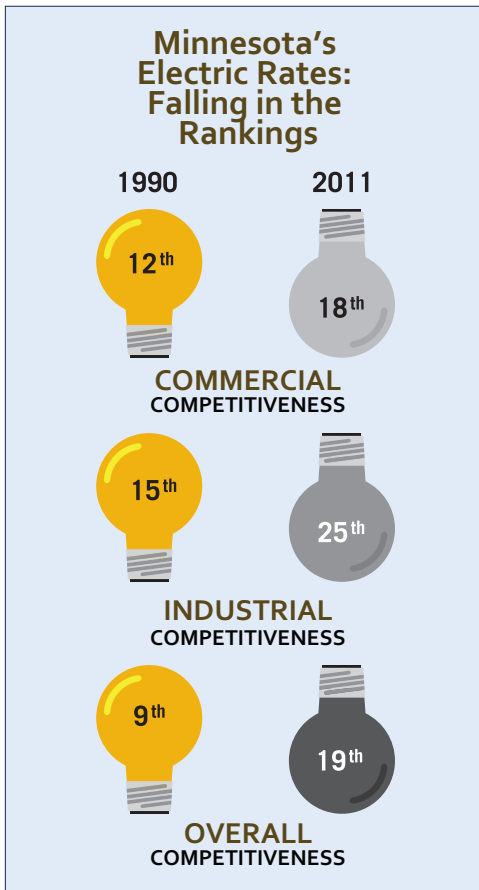
HF 630 - Amendment to Omnibus K-12 Education Omnibus Bill - Minimum Standards for High School Graduation (Erickson/Pratt)

The Chamber advocated keeping Minnesota high school diplomas meaningful by proposing a minimum level of proficiency required for graduation on the new suite of high school exams. High school diplomas should be based on multiple measures, including an assessment by which students must demonstrate mastery of fundamental academics. While the Chamber was not successful in establishing a minimum proficiency level, we will have a role in development of the new assessments as a member of the Career Pathways Advisory Task Force.

ELECTIONS *

The Chamber advocated for moving the statewide primary election from August to June starting in 2014 in order to drive stronger voter turnout, maximize candidate voter contact efforts, and ensure a more representative candidate selection process. Efforts to effect this change enjoyed bipartisan support in the House (HF 867), but the legislation did not reach a final vote. In its omnibus elections bill (SF 667), the Senate considered moving the primary to June but not until 2016; however, the measure was removed before the final vote. Prospects for the bill next year are uncertain because any changes to voting dates must be done early in the session to allow sufficient time for implementation.

*Indicates a bill that was not scored.
 Infographic Sources: Minnesota Jobs Outlook 2010-2020, Department of Employment and Economic Development (July 2012).



ENERGY

Energy costs for commercial and industrial ratepayers have increased more than 55 percent since 1990 due to deviations from cost-of-service principals and funding programs that subsidize incentives for renewable energy. Rather than new mandates and incentives, we advocated for a cost-based rates approach that would eliminate cross-subsidies among customer classes. Customers should pay their fair share of costs and nothing more.

HF 956 - Omnibus Energy Bill

Minnesota already has one of the most aggressive renewable energy mandates in the nation. The Chamber opposed the House Omnibus Energy Bill because it increased the state's renewable energy standard and created a separate solar energy standard. The solar energy standard applied only to investor-owned public utilities, mandating the utilities to procure the following percentage of retail sales from solar energy: 0.5% in 2016, 2% in 2020, and 4% in 2025. The bill also required investor-owned public utilities to procure

40% of their retail sales from qualified renewable energy sources by 2030. These mandates exempted certain industries in certain areas of the state because they are so energy intensive. These exemptions highlight sensitivity and concern about costs, but compound the financial burden and unfairness to others subjected to the mandates. Many other industries throughout the state have high energy use and costs as well. Further, this bill could potentially threaten the reliability of Minnesota's grid. Increasing reliance on intermittent resources like solar and wind at levels above 30% is currently untested with unknown impacts to reliability.

HF 956/SF 901 - Senate Omnibus Energy Bill - Commercial and Industrial Solar Energy Standard Exemption (Koenen Amendment)

This bill included a 1% solar mandate by 2025 and solar industry incentives and preferences. While not as expansive as the House version, the bill still would require significant investment in an expensive generation technology by utilities when they do not need new generation.

The Chamber supported an amendment to exempt all demand-metered customers 25 kilowatts and higher – the threshold to be considered a commercial/industrial customer across many of the state's investor-owned utilities – from the calculation and payment of 1% solar standard, to reduce their energy costs.

LEGISLATOR SPOTLIGHT: ENERGY

REPRESENTATIVE PAT GAROFALO
R-FARMINGTON

As Republican lead on the House Energy Committee, Representative Pat Garofalo is an important voice raising concerns about the increasing cost of energy in Minnesota and the policies that drive rates higher. Energy rates in Minnesota continue to increase faster than many of our surrounding states and the country as a whole, affecting the ability of businesses to compete, create and retain jobs. Representative Garofalo voted for the House energy omnibus bill in order to serve on the conference

committee and have impact on the final bill. We appreciate his efforts to make energy more affordable in Minnesota.

SENATOR LYLE KOENEN
DFL-CLARA CITY

Senator Lyle Koenen, recognizing the potential for cost increases to customers from provisions included in the omnibus energy bill, offered a key amendment to protect commercial and industrial customers from the costs of new solar mandates. Businesses throughout the state are concerned about increasing energy bills. Senator Koenen's amendment would have helped mitigate these costs.

SENATOR DAVID TOMASSONI
DFL-CHISHOLM

As chair of the Environment, Economic Development and Agriculture Finance Committee, Senator David Tomassoni authored and advanced the Chamber's priority cost-based electric rates legislation in the Senate. We appreciate Senator Tomassoni's hard work to ensure this important job retention and energy cost-saving legislation was included in his committee's omnibus bill. We also acknowledge his work to assure that there were no increased fees on water appropriation permits, aquatic plant management and mining industry fees in his bill.

ENVIRONMENT *

Despite bipartisan cooperation and success in improving efficiency and transparency in the state's environmental permitting and review process in previous years, the Legislature did not advance this issue this session, instead focusing on budget matters. It is anticipated that in 2014 the Legislature will address further reform proposals, including improvements to the 90-day permitting goal.

*Indicates a bill that was not scored.
Infographic Source: All data is from the U.S. Department of Energy December 2012 Energy Information Administration.

FISCAL

HF 677 - House Omnibus Tax Bill

The Chamber opposed the bill because of its \$2.6 billion tax increase including a permanent new 4th tier of 8.49% and 5th-tier surcharge of 12.49% for individual incomes, making Minnesota's tax rate the second highest nationally. The bill included a \$316 million (16%) corporate tax increase that would undermine Minnesota competitiveness. Other tax increases included an industrial sand mining tax, automatic inflation on various spending increases, a cigarette tax increase and a "street improvement fee," equivalent to a new property tax. We supported the Mayo Destination Medical Center provision, which provided economic development funding for public improvements for the City of Rochester, but opposed the overall bill.

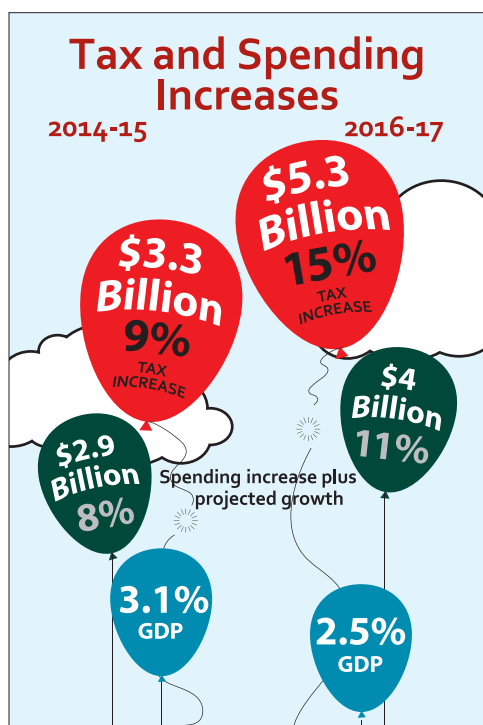
HF 677 - Senate Omnibus Tax Bill

This bill included a \$1.8 billion tax increase, raising the individual income tax from 7.85% to 9.4% on incomes greater than \$140,000 for married joint filing and \$70,000 for single filing. Under this proposal, Minnesota's individual income tax rate would be the fourth highest nationally, first nationally for certain income levels. The Chamber opposed the statewide property tax increases, business-to-business sales tax expansion, utility tax increases, and corporate tax increases included in this bill. We supported the Mayo Destination Medical Center, but opposed the overall bill due to its serious tax implications.

HF 677 - Final Tax Conference Committee Report

Historic tax increases of more than \$2.1 billion now place our state as one of highest tax states in the nation. The tax increases include: (1) a 25% increase in income tax, raising \$1.1 billion with 9.85% rate greater than \$150,000 for single filing, \$250,000 for married joint filing; (2) a \$424 million (21%) increase in corporate taxes; (3) new business-to-business taxes on businesses providing the services for warehouse and storage, telecommunication equipment, labor

repair and maintenance services for electronic, commercial, farm, medical, computer, and industrial equipment; and (4) cigarette tax increases of \$1.60 per pack and a 95% increase in tobacco products, making Minnesota the sixth highest nationally at \$2.83 per pack, much higher than surrounding states. As previously indicated, we supported the Mayo Destination Medical Center, and have long advocated for the capital equipment up-front sales-tax exemption and affiliate nexus tax provision, but because the overall tax burdens are so consequential to business competitiveness, the Chamber strongly opposed the bill.



HEALTH CARE

The Health and Human Services Omnibus bill (HF 1233) provides more than \$11 billion in state funding, a \$50 million target reduction from projected growth. The measure originally suggested additional surcharges on Medical Assistance and HMOs, caps on HMO reserves, and eliminating the repeal of the provider tax. Those measures would have harmed consumers through increased costs; however, the provisions were ultimately removed. The Chamber opposed a provision in the bill that creates a new mandated benefit for autism therapy and has concerns about the acceleration of existing surcharges, but did not take a position on the overall bill.

HF 5 - Health Insurance Exchange

The Chamber has consistently supported the creation of a state health insurance exchange to provide small businesses with greater information, choice and affordability in purchasing health insurance. We opposed this legislation because it financed a state exchange through a premium tax on small businesses, reduced innovation and consumer choice through active purchasing, and restricted small business representation and service on the governance board.

LEGISLATOR SPOTLIGHT:

HEALTH CARE

REP. JIM ABELER

R-ANOKA

SENATOR TERRI BONOFF

DFL-MINNETONKA

Representative Jim Abeler and Senator Terri Bonoff voted to strategically help advance Chamber positions on this legislation. We are grateful for their efforts to lessen small businesses' costs for purchasing insurance by reducing the premium tax and allowing for greater choice and competition within the exchange.

HF 1233 - Health and Human Services HMO Surcharge Amendment (Benson)

The Chamber supported this amendment because it eliminated a surcharge which would have increased the cost of health insurance for small businesses.

HF 1233 - Omnibus Health and Human Services Mandated Benefits Amendment (Benson)

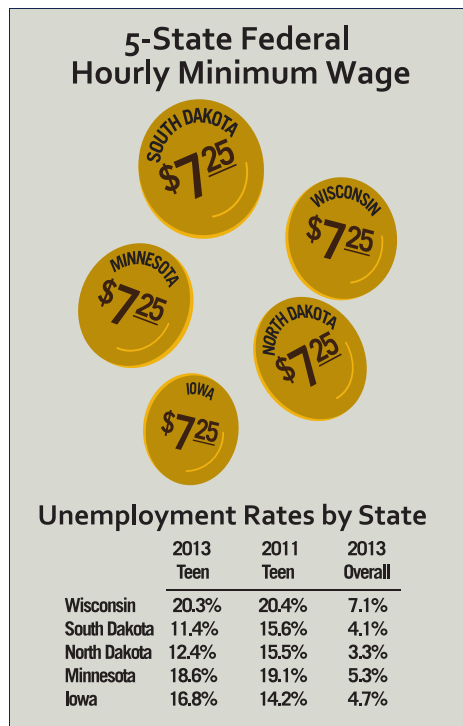
The Chamber supported this amendment because it required the state to determine the cost-effectiveness of existing and future mandated benefits, which make health coverage more expensive for small businesses in the fully insured market.

*Indicates a bill that was not scored.

Infographic Sources: Minnesota Management and Budget February, 2013 Budget Forecast and Senate Fiscal Analysis Staff report.

LABOR MANAGEMENT HF 92/SF 3 - Minimum Wage - Federal Conformity Amendment (Loon)

We supported this amendment to conform minimum wage to federal minimum wage law. An increase beyond federal conformity hurts Minnesota jobs and disproportionately affects small businesses and border communities across our state.



HF 729/SF 1607 - Omnibus Jobs and Economic Development Bill

This bill had a complicated procedural journey through the Legislature. The Senate companion to HF 729 started as SF 1057 but later became SF 1607. During the conference committee, HF 956/SF 901, the Energy Omnibus bill, was rolled into the Jobs and Economic Development bill.

The Chamber successfully eliminated a provision in the Senate bill (SF 1607, Gazelka amendment) that extended unemployment benefits to locked-out workers from the current 26 weeks to three years. The National Labor Relations Act controls the union-management relationship at the federal level. Federal law likely pre-empts this attempt at state interjection into

the process. This language unfortunately was included in the House bill and was inserted into the conference committee report passed by both bodies.

We supported several measures in the bill including workforce development provisions described in the Education and Workforce section of the voting record and an unemployment insurance tax cut. We appreciated the expedited unemployment insurance tax relief that moves up, by one year, the reduction projected to occur under current law.

Despite these positive measures, the Chamber ultimately opposed the bill due to the inclusion of the labor lockout language and the cost of the energy provisions on ratepayers.

LEGISLATOR SPOTLIGHT: LABOR/MANAGEMENT SENATOR PAUL GAZELKA R-NISSWA

Senator Paul Gazelka played an instrumental role in organizing a bipartisan group of senators to oppose extending unemployment benefits for locked-out workers well beyond the time allowed under current law. He was joined by all of the members of the Republican caucus and the following DFL Senators: Terri Bonoff, DFL-Minnetonka; Melisa Franzen, DFL-Edina; Vicki Jensen, DFL-Owatonna; Susan Kent, DFL-Woodbury; Ann Rest, DFL-New Hope; Bev Scalze, DFL-Little Canada; and Melissa Wiklund, DFL-Bloomington.

SF 1234 - Workers' Compensation

The Workers' Compensation Advisory Council bill, presented and supported by business and labor, included provisions giving workers appropriate benefit increases while studying health care costs and laying the groundwork for reforms in 2014. The Chamber believes this bill helps move Minnesota in the right direction, and it is our hope that the opportunity to study the system's health care costs will uncover strategies to address cost concerns. Business

and labor will both participate in the study and recommendation process via the Workers' Compensation Advisory Council.

LEGISLATOR SPOTLIGHT: WORKERS' COMPENSATION REPRESENTATIVE ANDREA KIEFFER, R-WOODBURY REPRESENTATIVE TIM MAHONEY DFL-ST. PAUL

Representative Andrea Kieffer, the House Republican liaison to the Workers' Compensation Advisory Council, was an important leader in moving the provisions in the council agreement to final legislation. She participated in many of the council meetings and was effective in articulating the importance of these provisions to her colleagues.

The agreement was one of the most significant between business and labor representatives in many years. Representative Kieffer was instrumental in ensuring the unanimous passage of the Workers' Compensation Advisory Council reform legislation in the House. Representative Tim Mahoney as Chair of the House Jobs and Economic Development Committee was also key to final passage of the agreement.

TRANSPORTATION *

The Transportation Finance Policy bill (SF 1444) represented a "lights on" legislative measure that effectively continued current funding. The Legislature considered including a wholesale fuel receipts tax, a gas tax, a metro sales tax on transit, and a street improvement fee proposal to allow local governments to impose property taxes, potentially only on business, to raise additional revenue. These measures were not included in the final bill, in many cases due to the Chamber's advocacy.

*Indicates a bill that was not scored.

Infographic Sources: These rates are for 16-19 year-olds. 2010 and 2011 averages are BLS tabulations of CPS data. Current teen rate is based on 2012 BLS tabulations of Current Population Survey (BLS and Census) data.

+ Voted in favor of Chamber position
 - Voted against Chamber position

Legislator	Party	District	HF 630 Omnibus K-12 Education Bill Conference Committee Report	HF 630 Amendment: Minimum Standards for High School Graduation (Pratt)	HF 956 SF 901 Omnibus Senate Energy Bill (Koenen)	HF 677 Senate Omnibus Tax Bill	HF 677 Final Tax Conference Committee Report	HF 5 Health Insurance Exchange Bill	HF 1233 Health and Human Services HMO Surcharge (Benson)	HF 1233 Amendment: Mandated Benefits (Benson)	HF 92 SF3 Amendment: Minimum Wage Federal Conformity (Dahms)	HF 1234 Workers' Compensation Bill	HF 729 Omnibus Jobs and Economics Development Bill Conference Committee Report	HF 1607 Amendment: Lockout Benefits Extension (Gazelka)
Majority Leader Thomas M. Bakk	DFL	3	-	-	-	-	-	-	-	-	-	+	-	-
Senator Bruce D. Anderson	R	29	+	+	+	+	+	+	+	+	+	-	+	+
Senator Michelle Benson	R	31	+	+	+	+	+	+	+	+	+	NV	+	+
Senator Terri E. Bonoff	DFL	44	-	+	+	+	+	-	+	-	-	+	-	+
Senator David M. Brown	R	15	+	+	+	+	NV	+	+	+	+	NV	+	+
Senator Jim Carlson	DFL	51	-	-	-	-	-	-	-	-	-	+	-	-
Senator Roger C. Chamberlain	R	38	+	+	+	+	+	+	+	+	+	-	+	+
Senator Bobby Joe Champion	DFL	59	-	-	NV	-	-	-	-	-	-	+	-	NV
Senator Greg D. Clausen	DFL	57	-	-	+	-	-	-	-	-	-	+	-	-
Senator Richard Cohen	DFL	64	-	-	-	-	-	-	-	-	-	+	-	-
Senator Kevin L. Dahle	DFL	20	-	-	-	-	-	-	-	-	-	+	-	-
Senator Gary Dahms	R	16	+	+	+	NV	+	+	+	+	+	-	+	+
Senator D. Scott Dibble	DFL	61	-	-	-	-	-	-	-	-	-	+	-	-
Senator Kari Dziedzic	DFL	60	-	-	-	-	-	-	-	-	-	+	-	-
Senator Chris A. Eaton	DFL	40	-	NV	-	-	-	-	-	-	-	+	-	-
Senator Kent Eken	DFL	4	-	-	+	-	-	-	-	-	-	+	-	-
Senator Michelle L. Fischbach	R	13	+	+	+	+	+	+	+	+	+	+	+	+
Senator Melisa Franzen	DFL	49	-	-	-	+	+	-	-	-	-	+	-	+
Senator Paul E. Gazelka	R	9	+	+	+	+	+	+	+	+	+	-	+	+
Senator Barb Goodwin	DFL	41	-	-	-	-	-	-	-	-	-	+	-	-
Senator Dan D. Hall	R	56	+	+	+	+	+	+	+	+	+	-	+	+
Minority Leader David W. Hann	R	48	+	+	+	+	+	+	+	+	+	+	+	+
Senator Foug Hawj	DFL	67	-	-	-	-	-	-	-	-	-	+	-	-
Senator Jeff Hayden	DFL	62	-	-	-	-	-	-	-	-	-	+	-	NV
Senator John A. Hoffman	DFL	36	-	-	-	-	-	-	-	-	-	+	-	-
Senator Karin Housley	R	39	+	+	+	+	+	+	+	+	+	-	+	+
Senator Bill Ingebrigtsen	R	8	+	+	+	+	+	+	NV	+	+	-	+	+
Senator Vicki Jensen	DFL	24	-	-	-	+	+	-	-	-	-	+	-	+
Senator Alice M. Johnson	DFL	37	-	-	-	-	-	-	-	-	-	+	-	-
Senator Susan Kent	DFL	53	-	-	-	+	+	-	-	-	-	+	-	+
Senator Mary Kiffmeyer	R	30	+	+	+	+	+	+	+	+	+	+	+	+
Senator Lyle Koenen	DFL	17	-	NV	+	-	-	-	NV	NV	-	NV	-	-
Senator Ron Latz	DFL	46	-	+	-	-	-	-	-	-	-	+	-	-
Senator Warren Limmer	R	34	+	+	+	+	+	+	+	+	+	-	+	+
Senator Tony Lourey	DFL	11	-	-	-	-	-	-	-	-	-	+	-	-
Senator John Marty	DFL	66	-	-	-	-	-	-	-	-	-	+	-	-
Senator James P. Metzen	DFL	52	-	-	+	-	-	-	-	-	-	+	-	-
Senator Jeremy R. Miller	R	28	+	+	NV	+	+	+	+	-	+	NV	+	NV

+ Voted in favor of Chamber position
 - Voted against Chamber position

Legislator	Party	District	HF 630 Omnibus K-12 Education Bill Conference Committee Report	HF 630 Amendment: Minimum Standards for High School Graduation (Pratt)	HF 956 SF 901 Omnibus Senate Energy Bill (Koenen)	HF 677 Senate Omnibus Tax Bill	HF 677 Final Tax Conference Committee Report	HF 5 Health Insurance Exchange Bill	HF 1233 Health and Human Services HMO Surcharge (Benson)	HF 1233 Amendment: Mandated Benefits (Benson)	HF 92 SF3 Amendment: Minimum Wage Federal Conformity (Dahms)	HF 1234 Workers' Compensation Bill	HF 729 Omnibus Jobs and Economics Development Bill Conference Committee Report	HF 1607 Amendment: Lockout Benefits Extension (Gazelka)
Senator Carla J. Nelson	R	26	-	+	+	+	+	+	+	-	+	+	+	+
Senator Scott J. Newman	R	18	+	+	+	+	+	+	+	+	+	-	+	+
Senator Sean R. Nienow	R	32	+	+	+	+	+	+	+	+	+	-	+	+
Senator Julianne E. Ortman	R	47	+	+	+	+	+	+	+	+	+	-	+	+
Senator David J. Osmek	R	33	+	+	+	+	+	+	+	+	+	-	+	+
Senator Sandra L. Pappas	DFL	65	-	-	-	-	-	-	-	-	-	+	-	-
Senator John C. Pederson	R	14	-	+	+	+	+	+	+	+	+	+	+	+
Senator Branden Petersen	R	35	+	+	+	+	+	+	NV	NV	+	-	+	+
Senator Eric R. Pratt	R	55	+	+	+	+	+	+	+	+	+	+	+	+
Senator Roger J. Reinert	DFL	7	-	-	-	-	-	-	-	-	-	+	-	-
Senator Ann H. Rest	DFL	45	+	+	-	-	-	-	-	NV	-	+	-	+
Senator Julie A. Rosen	R	23	+	+	NV	+	+	+	NV	NV	+	NV	+	+
Senator Carrie Ruud	R	10	+	+	NV	+	+	+	+	+	+	NV	+	+
Senator Tom Saxhaug	DFL	5	-	-	-	-	-	-	-	-	-	+	-	-
Senator Bev Scalze	DFL	42	-	-	-	+	-	-	-	-	-	+	-	+
Senator Matt Schmit	DFL	21	-	-	-	-	-	-	-	-	-	+	-	-
Senator David H. Senjem	R	25	+	+	+	-	-	+	+	+	+	-	+	+
Senator Kathy Sheran	DFL	19	-	-	-	-	-	-	-	-	-	+	-	-
Senator Katie Sieben	DFL	54	-	-	-	-	-	-	-	-	-	+	-	-
Senator Rod Skoe	DFL	2	-	-	-	-	-	-	-	-	-	+	-	-
Senator Dan Sparks	DFL	27	-	-	+	-	-	-	-	-	+	+	-	-
Senator LeRoy A. Stumpf	DFL	1	-	-	-	-	-	-	-	-	-	+	-	-
Senator Dave Thompson	R	58	+	+	+	+	+	+	+	+	+	-	+	+
Senator David J. Tomassoni	DFL	6	-	-	-	-	-	-	-	-	-	+	-	-
Senator Patricia Torres Ray	DFL	63	-	-	-	-	-	-	-	-	-	+	-	-
Senator Bill Weber	R	22	+	+	+	+	+	+	+	+	+	+	+	+
Senator Torrey N. Westrom	R	12	-	+	NV	+	+	+	-	+	+	NV	-	+
Senator Charles W. Wiger	DFL	43	-	-	-	-	-	-	-	-	-	+	-	-
Senator Melissa H. Wiklund	DFL	50	-	-	-	-	-	-	-	-	-	+	-	+

+ Voted in favor of Chamber position
 - Voted against Chamber position

Legislator	Party	District	HF 630 Omnibus K-12 Education Bill Conference Committee Report	HF 630 Amendment: Minimum Standards for High School Graduation (S. Erickson)	HF 956 Omnibus Energy Bill	HF 677 House Omnibus Tax Bill	HF 677 Final Tax Conference Committee Report	HF 5 Health Insurance Exchange Bill	HF 1233 Amendment: Minimum Wage Federal Conformity (Loon)	HF 1233 Worker's Compensation Bill	HF 92 SF 3 Omnibus Jobs and Economic Development Bill Conference Committee Report
Speaker Paul Thissen	DFL	61B	-	-	-	-	-	-	-	+	-
Representative Jim Abeler	R	35A	-	+	NV	+	+	+	+	+	+
Representative Tony Albright	R	55B	+	+	+	+	+	+	+	+	+
Representative Susan Allen	DFL	62B	-	-	-	-	-	-	-	+	-
Representative Mark Anderson	R	09A	+	+	+	+	+	+	+	+	+
Representative Paul Anderson	R	12B	+	+	+	+	+	+	+	NV	+
Representative Sarah Anderson	R	44A	+	+	+	+	+	+	+	+	+
Representative Tom Anzalc	DFL	05B	-	-	-	-	-	-	-	+	-
Representative Joe Atkins	DFL	52B	-	-	-	-	-	-	-	+	-
Representative Bob Barrett	R	32B	-	+	+	+	+	+	+	+	+
Representative Michael Beard	R	55A	+	+	+	+	+	+	+	+	+
Representative John Benson	DFL	44B	-	-	-	-	-	-	-	+	-
Representative Mike Benson	R	26B	+	+	+	+	+	+	+	+	+
Representative Connie Bernardy	DFL	41A	-	-	-	-	-	-	-	+	-
Representative David Bly	DFL	20B	-	-	-	-	-	-	-	+	NV
Representative Kathy Brynaert	DFL	19B	-	-	-	-	-	-	-	+	-
Representative Lyndon Carlson	DFL	45A	-	-	-	-	-	-	-	+	-
Representative Karen Clark	DFL	62A	-	-	-	-	-	-	-	+	-
Representative Tony Cornish	R	23B	+	+	+	+	+	+	+	NV	+
Minority Leader Kurt Daudt	R	31A	+	+	+	+	+	+	+	+	+
Representative Greg Davids	R	28B	-	+	+	+	+	+	+	+	+
Representative Jim Davnie	DFL	63A	-	-	-	-	-	-	-	+	-
Representative Matt Dean	R	38B	+	+	+	NV	+	+	+	+	+
Representative Raymond Dehn	DFL	59B	-	-	-	-	-	-	-	+	-
Representative Bob Dettmer	R	39A	+	+	+	+	+	+	+	+	+
Representative David Dill	DFL	03A	-	-	-	-	-	-	NV	+	-
Representative Zachary Dorholt	DFL	14B	-	-	-	-	-	-	-	+	-
Representative Steve Drazkowski	R	21B	+	+	+	+	+	NV	+	+	+
Representative Ron Erhardt	DFL	49A	-	+	-	-	+	-	-	+	-
Representative Roger Erickson	DFL	02A	-	-	+	-	-	-	-	+	-
Representative Sondra Erickson	R	15A	+	+	+	+	+	+	+	+	+
Representative Dan Fabian	R	01A	+	+	+	+	+	+	+	+	+
Representative Andrew Falk	DFL	17A	-	-	-	-	-	-	-	+	-

+ Voted in favor of Chamber position
 - Voted against Chamber position

Legislator	Party	District	HF 630 Omnibus K-12 Education Bill Conference Committee Report	HF 630 Amendment: Minimum Standards for High School Graduation (S. Erickson)	HF 956 Omnibus Energy Bill	HF 677 House Omnibus Tax Bill	HF 677 Final Tax Conference Committee Report	HF 5 Health Insurance Exchange Bill	HF 1233 Amendment: Minimum Wage Federal Conformity (Loon)	HF 1233 Worker's Compensation Bill	HF 92 SF 3 Omnibus Jobs and Economic Development Bill Conference Committee Report
Representative Tim Faust	DFL	11B	-	-	-	-	-	-	-	+	-
Representative Peter Fischer	DFL	43A	-	-	-	-	-	-	-	+	-
Representative David Fitzsimmons	R	30B	+	+	+	+	+	+	+	+	+
Representative Mary Franson	R	08B	+	+	+	+	+	+	+	+	+
Representative Mike Freiberg	DFL	45B	-	-	-	-	-	-	-	+	-
Representative Patti Fritz	DFL	24B	-	-	-	-	-	-	-	+	-
Representative Pat Garofalo	R	58B	+	+	-	+	+	+	+	+	+
Representative Steve Green	R	02B	+	+	+	+	+	+	+	+	NV
Representative Glenn Gruenhagen	R	18B	+	+	+	+	+	+	+	+	+
Representative Bob Gunther	R	23A	+	+	+	+	+	+	NV	+	-
Representative Tom Hackbarth	R	31B	+	+	+	+	+	+	+	+	+
Representative Laurie Halverson	DFL	51B	-	-	-	+	+	+	-	+	-
Representative Rod Hamilton	R	22B	+	+	+	+	+	+	+	+	+
Representative Rick Hansen	DFL	52A	-	-	-	-	-	-	-	+	-
Representative Alice Hausman	DFL	66A	-	-	-	-	-	-	-	NV	-
Representative Jerry Hertaus	R	33A	+	+	+	+	+	+	+	+	+
Representative Debra Hilstrom	DFL	40B	-	-	-	-	-	-	-	+	-
Representative Mary Liz Holberg	R	58A	+	+	+	+	+	+	+	+	+
Representative Joe Hoppe	R	47B	+	+	+	+	+	+	+	+	+
Representative Frank Hornstein	DFL	61A	-	-	-	-	-	-	-	+	-
Representative Melissa Hortman	DFL	36B	-	-	-	-	-	-	-	+	-
Representative Jeff Howe	R	13A	+	+	+	+	+	+	+	+	+
Representative Thomas Huntley	DFL	07A	-	-	-	-	-	-	-	+	-
Representative Jason Isaacson	DFL	42B	-	-	-	-	-	-	-	+	-
Representative Brian Johnson	R	32A	+	+	+	+	+	+	+	+	+
Representative Clark Johnson	DFL	19A	-	-	-	-	-	-	-	+	-
Representative Sheldon Johnson	DFL	67B	-	-	-	-	-	-	-	+	-
Representative Phyllis Kahn	DFL	60B	-	-	-	-	-	-	-	+	-
Representative Tim Kelly	R	21A	+	+	+	+	+	+	+	+	+
Representative Andrea Kieffer	R	53B	+	+	+	+	+	+	+	+	+
Representative Debra Kiel	R	01B	+	+	+	+	+	+	+	+	+
Representative Ron Kresha	R	09B	+	+	+	+	+	+	+	+	+
Representative Carolyn Laine	DFL	41B	-	-	-	-	-	-	-	+	-
Representative Ernie Leidiger	R	47A	+	+	+	+	+	+	+	+	+

+ Voted in favor of Chamber position
 - Voted against Chamber position

Legislator	Party	District	HF 630 Omnibus K-12 Education Bill Conference Committee Report	HF 630 Amendment: Minimum Standards for High School Graduation (S. Erickson)	HF 956 Omnibus Energy Bill	HF 677 House Omnibus Tax Bill	HF 677 Final Tax Conference Committee Report	HF 5 Health Insurance Exchange Bill	HF 1233 Amendment: Minimum Wage Federal Conformity (Loon)	HF 1233 Worker's Compensation Bill	HF 92 SF 3 Omnibus Jobs and Economic Development Bill Conference Committee Report
Representative Ann Lenczewski	DFL	50B	-	-	-	-	-	-	-	+	-
Representative John Lesch	DFL	66B	-	-	-	-	-	-	-	+	-
Representative Tina Liebling	DFL	26A	-	-	-	-	-	-	-	+	-
Representative Ben Lien	DFL	04A	-	-	-	-	-	-	-	+	-
Representative Leon Lillie	DFL	43B	-	-	-	-	-	-	-	+	-
Representative Diane Loeffler	DFL	60A	-	-	-	-	-	-	-	+	-
Representative Kathy Lohmer	R	39B	+	+	+	+	+	+	+	NV	+
Representative Jenifer Loon	R	48B	+	+	+	+	+	+	+	+	+
Representative Tara Mack	R	57A	+	+	+	+	+	+	+	+	+
Representative Tim Mahoney	DFL	67A	-	-	-	-	-	-	-	+	-
Representative Carlos Mariani	DFL	65B	-	-	-	-	-	-	-	+	-
Representative Paul Marquart	DFL	04B	-	-	-	-	-	-	-	+	-
Representative Sandra Masin	DFL	51A	-	-	-	-	-	-	-	+	-
Representative Joe McDonald	R	29A	+	+	+	+	+	+	+	+	+
Representative Jay McNamar	DFL	12A	-	-	-	-	-	-	-	+	-
Representative Denny McNamara	R	54B	+	+	+	+	+	+	+	+	+
Representative Carly Melin	DFL	06A	-	-	-	-	-	-	-	+	-
Representative Jason Metsa	DFL	06B	-	-	-	-	-	-	-	+	-
Representative Rena Moran	DFL	65A	-	-	-	-	-	-	-	+	-
Representative Will Morgan	DFL	56B	-	-	-	-	-	-	-	+	-
Representative Joe Mullery	DFL	59A	-	-	-	-	-	-	-	+	-
Majority Leader Erin Murphy	DFL	64A	-	-	-	-	-	-	-	+	-
Representative Mary Murphy	DFL	03B	-	-	-	-	-	-	-	+	-
Representative Pam Myhra	R	56A	+	+	+	+	+	+	+	+	+
Representative Michael V. Nelson	DFL	40A	-	-	-	-	-	-	-	+	-
Representative Jim Newberger	R	15B	+	+	+	+	+	+	+	+	+
Representative Jerry Newton	DFL	37A	-	-	-	-	-	-	-	+	-
Representative Bud Nornes	R	08A	+	+	+	+	+	+	+	+	+
Representative Kim Norton	DFL	25B	-	-	-	-	-	-	NV	+	-
Representative Tim O'Driscoll	R	13B	+	+	+	+	+	+	+	+	+
Representative Marion O'Neill	R	29B	+	+	+	+	+	+	+	+	+
Representative Michael Paymar	DFL	64B	-	-	-	-	-	-	-	+	-
Representative Gene Pelowski	DFL	28A	-	-	+	-	-	-	-	+	-

+ Voted in favor of Chamber position
 - Voted against Chamber position

Legislator	Party	District	HF 630 Omnibus K-12 Education Bill Conference Committee Report	HF 630 Amendment: Minimum Standards for High School Graduation (S. Erickson)	HF 956 Omnibus Energy Bill	HF 677 House Omnibus Tax Bill	HF 677 Final Tax Conference Committee Report	HF 5 Health Insurance Exchange Bill	HF 1233 Amendment: Minimum Wage Federal Conformity (Loon)	HF 1233 Worker's Compensation Bill	HF 92 SF 3 Omnibus Jobs and Economic Development Bill Conference Committee Report
Representative Joyce Peppin	R	34A	+	+	+	+	+	+	+	+	+
Representative John Persell	DFL	05A	-	-	-	-	-	-	-	+	-
Representative John Petersburg	R	24A	+	+	+	+	+	+	NV	+	+
Representative Jeanne Poppe	DFL	27B	-	-	-	-	-	-	-	+	-
Representative Cindy Pugh	R	33B	+	+	+	+	+	+	+	+	+
Representative Duane Quam	R	25A	+	+	+	+	+	+	+	+	+
Representative Joe Radinovich	DFL	10B	-	-	-	+	-	-	-	+	-
Representative Paul Rosenthal	DFL	49B	-	-	-	+	+	-	-	+	-
Representative Linda Runbeck	R	38A	+	+	+	+	+	+	+	NV	+
Representative Tim Sanders	R	37B	+	+	+	+	+	+	+	+	+
Representative Shannon Savick	DFL	27A	-	-	+	-	-	-	-	+	-
Representative Mary Sawatzky	DFL	17B	-	-	-	-	-	-	-	+	-
Representative Dan Schoen	DFL	54A	-	-	-	-	-	-	-	+	-
Representative Joe Schomacker	R	22A	+	+	+	+	+	+	+	+	+
Representative Peggy Scott	R	35B	+	+	+	+	+	+	+	+	+
Representative Yvonne Selcer	DFL	48A	-	-	-	+	+	-	-	+	-
Representative Steve Simon	DFL	46B	-	-	-	-	-	-	-	+	-
Representative Erik Simonson	DFL	07B	-	-	-	-	-	-	-	+	-
Representative Linda Slocum	DFL	50A	-	-	-	-	-	-	-	+	-
Representative Mike Sundin	DFL	11A	-	-	+	-	-	-	-	+	-
Representative Chris Swedzinski	R	16A	+	+	+	+	+	+	+	+	+
Representative Tama Theis	R	14A	+	+	+	+	+	+	+	+	+
Representative Paul Torkelson	R	16B	+	+	+	+	+	+	+	+	+
Representative Mark Uglem	R	36A	-	+	+	+	+	+	+	NV	+
Representative Dean Urdahl	R	18A	-	+	+	+	+	+	+	+	+
Representative Jean Wagenius	DFL	63B	-	-	-	-	-	-	-	+	-
Representative Joann Ward	DFL	53A	-	-	-	-	-	-	-	+	-
Representative John Ward	DFL	10A	-	-	-	-	-	-	-	+	-
Representative Anna Wills	R	57B	+	+	+	+	+	+	+	+	+
Representative Ryan Winkler	DFL	46A	-	-	-	-	-	-	-	+	-
Representative Kelby Woodard	R	20A	+	+	+	+	+	+	+	+	+
Representative Barb Yarusso	DFL	42A	-	-	-	-	-	-	-	+	-
Representative Kurt Zellers	R	34B	+	+	+	+	+	+	+	+	+
Representative Nick Zerwas	R	30A	+	+	+	+	+	+	+	+	+